

FALL 2023 | VOL 15  
YOUR COMMUNITY NEWSLETTER



# What's Inside?

COMMUNITY TRUST UPDATE

UPDATES FROM THE COMMUNITY LAND TECHNICIANS

THAIDENE NÉNÉ COMMUNITY TOUR

Ya'thi Néné Land and Resources' purpose is to protect the land, water, and air of Nuhenéne and to promote the people of the Denesuline First Nations and Athabasca communities that live there.

# Ya'thi Néné: Stewards of the Lands of the North

## A Case Study



A recent case study was recently published that sheds light on the remarkable work of Ya'thi Néné Lands and Resources (YNLR). This series of case studies, authored by Vern Bachiu, Priscilla Wolf, and Murray Fulton from the Johnson Shoyama School of Public Policy at the University of Saskatchewan, addresses the importance of sharing economic development stories within Saskatchewan. The study not only highlights the resilience, wisdom, and strength of our Athabasca Basin communities but also stresses the crucial role they play in economic development for the region.

A significant portion of the case study delves into YNLR's role in the Duty to Consult process and its dedication to safeguarding the Athabasca region's lands and resources. Recognizing the significance of Indigenous communities participating in the Duty to Consult process to uphold treaty and Indigenous rights, the study emphasizes the challenges faced by many communities across the province lacking the expertise and resources for meaningful engagement. YNLR stands out by providing essential support, enabling its community members to actively participate in the Duty to Consult process, thereby supporting meaningful economic participation.

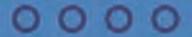
The authors, through their research, thoughtful analysis, and a genuine commitment to understanding the intricacies of our communities, have crafted an insightful case study. This document serves as a reflection of the unity of the seven Athabasca communities.

We encourage you to explore the case study and celebrate the impactful journey of Ya'thi Néné Lands and Resources in contributing to economic participation and fostering resilience within our communities. The publication can be found online at <https://www.schoolofpublicpolicy.sk.ca/research-ideas/projects-and-labs/indigenous-leadership-governance-and-development-project.php#top>

“Not industry alone, not government alone, not communities alone – we must all work together. We need to have respect for each other. We will not agree on everything, but we can always listen to each other.”

- Mary Denechezhe, Chairperson

## Exploration Agreements

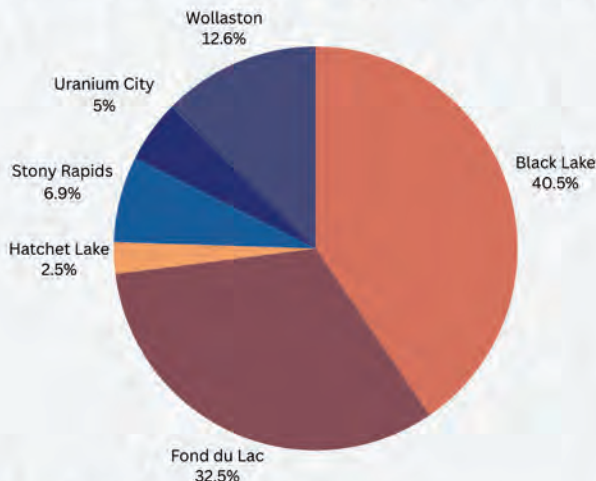


The Exploration Agreement outlines a framework for partnership and contains measures to accommodate, mitigate, and address concerns, including impacts to Indigenous rights, cultural values, and the environment in relation to exploration activities.

The seven Athabasca Basin Community Leaders and the Ya'thi Néné Board of Directors recently approved two (2) additional Exploration Agreements with Basin Energy and CanAlaska. This brings the total to five (5) approved Exploration Agreements throughout the Basin including previous agreements signed with Denison Mines Corp., Fortune Bay Corp. and Standard Uranium Ltd. YNLR is actively negotiating additional Exploration Agreements and will be publicizing new partnerships as they become established.

## Athabasca Community Trust Fall Round 2023

On November 23rd and 24th, YNLR Administrative/Communications Assistant, Celeste Robillard, met with the Community Trustees in Prince Albert to review the Fall 2023 round of proposals for the Athabasca Community Trust. Charlie Denechezhe (Hatchet Lake), Tina Alphonse (Black Lake), Gabriel Stenne Jr. (Fond-du-Lac), Lillian Laprise (PRO) and Robert Long (Corporate Trustee for TD Bank) were all in attendance. Over the course of 2 days, a total of 22 proposals were reviewed and 18 proposals were approved. The value of the proposals approved totaled \$793,127.23.



\*No Proposals received from Camsell Portage

\*\*Dollar amounts vary based on number of proposals & funds available per community

## Annual General Meeting

The Ya'thi Néné Lands and Resources (YNLR) Annual General Meeting (AGM) was held in Saskatoon on October 25th and 26th, 2023.

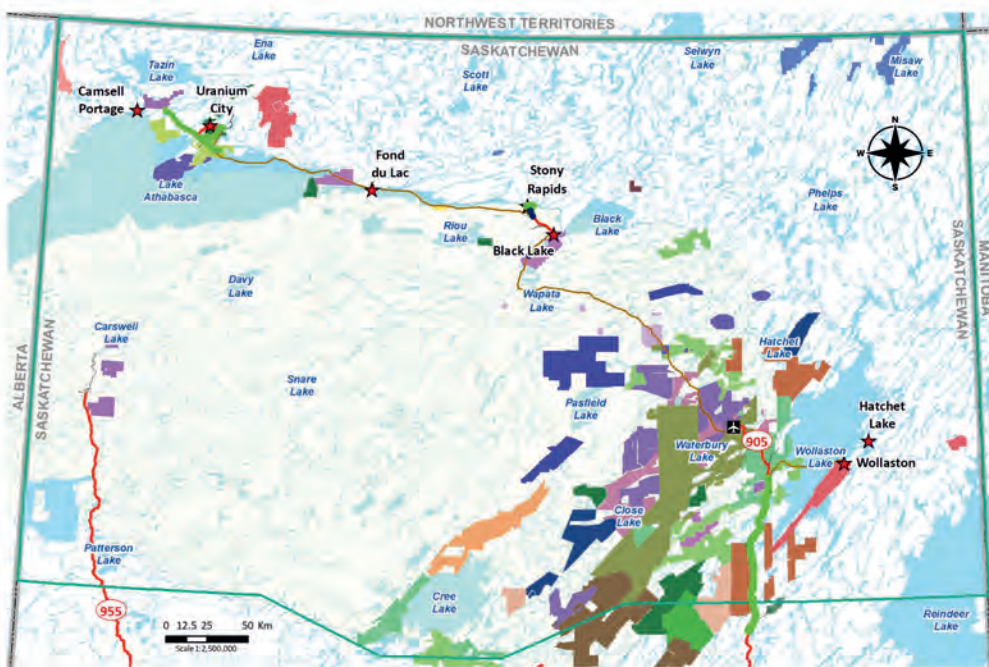
The AGM is a yearly meeting of YNLR shareholders (the seven Athabasca Basin Community Leaders) whereby the shareholders receive the Board of Directors Annual Report, the audited financial statements, confirm Directors and appoint an auditor for the next year.

The Leadership reviewed and confirmed the appointment terms for the Board of Directors and accepted the YNLR Annual Report from the Board of Directors.

The community leaders reviewed, discussed and provided feedback on a variety of initiatives including:

- Reserve Land Environmental Management
- Nuhenene Land Clean Up
- Education/Training/Employment Gathering
- Indigenous Protected Areas
- Cumulative Effects Management
- Agreements with Industry

# YA' THI NÉNÉ and the DUTY TO CONSULT



Legend	
	Nuhenéné
	Athabasca Basin
	Ministry of Highways
	SaskPower
	92 Energy
	ALX Resources Corp
	Appia
	Basin Energy
	Baselode
	Brunswick
	CanAlaska
	Cosa
	Denison
	Eagle Plains
	F3 (Fission 3.0)
	Fortune Bay
	IsoEnergy
	NexGen
	Orano
	Okapi
	Purepoint
	Pegasus
	Standard Uranium
	Skyharbour
	Terra
	Trench Metals
	UEC
	VR Resources
	Valor Resources

Project Name	Permit Length	Permitted Activity	Project Name	Permit Length	Permitted Activity
92 Energy Clover	Aug-25	exploration	IsoEnergy Radio	Dec-24	exploration
92 Energy Cypress	Nov-24	exploration	IsoEnergy Ranger	Nov-24	exploration
92 Energy Dorado	Jul-25	exploration	IsoEnergy Thorburn	Dec-24	exploration
92 Energy Gemini	Aug-25	exploration	IsoEnergy Trident	Dec-23	exploration
92 Energy laydown site land disposition	2027	exploration	MoE Wollaston Lake Geological Mapping	---	mapping
92 Energy Powerline	Nov-24	exploration	MoH 65km N Points North sand and gravel lease	Dec-56	infrastructure
92 Energy Tower	Mar-24	exploration	MoH Aggregate Exploration	---	infrastructure
92 Energy Wares	Apr-25	exploration	MoH Wollaston Road Culvert Replacement	---	maintenance
92 Energy Wormboiler	Apr-25	exploration	MoH KM 13 sand and gravel lease	Nov-56	infrastructure
ALX Bradley	Mar-25	exploration	MoH KM 115 sand and gravel lease	Oct-56	infrastructure
ALX Crystal Lithium Project	Dec-24	prospecting	MoH KM 152 sand and gravel lease	Dec-56	infrastructure
Appia Alcés Lake	Mar-24	exploration	MoH 74P004	Mar-49	infrastructure
Appia Eastside	Nov-23	exploration	MoH 74P008	Mar-43	infrastructure
Appia Industrial Lease	Mar-56	construction	MoH 74P009	decades	lease expansion
Appia Loranger	Nov-23	exploration	MoH 74P011	decades	lease expansion
Baselode Hook	Dec-06	exploration	MoH 74P012	decades	lease expansion
Basin Energy Geikie	Nov-26	exploration	MoH 74P01	---	exploration
Basin Energy Marshall	Dec-24	exploration	NexGen SW1	---	exploration
Brunswick Exploration Lake Athabasca	---	prospecting/rock sampling	Okapi Newnham	Jul-24	exploration
Brunswick Exploration Wollaston Prospecting	Mar-24	prospecting/rock sampling	Orano Close Lake	Dec-24	exploration
Cameco Cigar Lake Mineral Exploration	Dec-24	mining	Orano McClean Lake	Jul-26	exploration
Cameco Cigar Lake Phase II	---	---	Orano Midwest	Dec-24	exploration
Cameco Dawn Lake	Dec-23	exploration	Orano Waterbury/Cigar Lake	Dec-25	exploration
Cameco Forsyth	Dec-25	exploration	Orano Waterbury UEM	Dec-24	exploration
Cameco Laydown Areas	Sep-28	exploration	Orano Waterfound River	Dec-25	exploration
Cameco McArthur River	Dec-25	exploration	Pegasus Pine Channel	Apr-24	exploration
Cameco Read Lake	Sep-24	exploration	Points Athabasca gravel pit	---	infrastructure
Cameco Studer Option	Dec-24	exploration	Potzus Aggregate gravel pit	---	infrastructure
Cameco Surface Lease Amendment	---	exploration	Purepoint Red Willow	Mar-26	exploration
CanAlaska Frontier	---	prospecting	Purepoint Tabernor Group	Nov-23	exploration
CanAlaska Laydown Site Industrial Permit	Mar-28	exploration	Purepoint Turnor Lake	Aug-26	exploration
CanAlaska McTavish	Nov-24	exploration	SaskPower BL501	Mar-30	vegetation clearing/maintenance
CanAlaska North Millennium	Nov-24	exploration	SaskPower BS1	Dec-24	vegetation clearing/maintenance
CanAlaska Seal Lake Camp	Mar-28	exploration	SaskPower C2W	Dec-24	vegetation clearing/maintenance
CanAlaska West McArthur	Dec-25	exploration	SaskPower Dams	Dec-23	vegetation clearing/maintenance
Cosa Orion	Dec-26	exploration	SaskPower HDD-511 Pole Maintenance	Mar-26	maintenance
Cosa Ursa	Sep-25	exploration	SaskPower P3R	Dec-24	vegetation clearing/maintenance
Cree Lake Lodge Airstrip Lease	33 years	airstrip lease	SaskPower ST511 Distribution Line	Dec-23	vegetation clearing/maintenance
Denison Bell Lake	Dec-23	exploration	SaskPower ST512 Distribution Line	Dec-23	vegetation clearing/maintenance
Denison Candle Lake	Dec-23	exploration	SaskPower W3B Geotechnical	Dec-23	geotechnical
Denison Darby	Dec-23	exploration	SaskPower W3B	Dec-24	vegetation clearing/maintenance
Denison Johnston Lake	Dec-25	exploration	SaskPower WPMP Rebuild	Mar-24	vegetation clearing/maintenance
Denison Moon Lake	Dec-23	exploration	Selwyn Lake Lodge lagoon refurbishing	2025	construction
Denison Moon South	Dec-23	exploration	Skyharbour Moore Lake	Mar-26	exploration
Denison Waterbury Lake	Nov-24	exploration	Skyharbour Russell Lake	Apr-25	exploration
Denison Wheeler River	Jun-27	exploration	Standard Uranium Ascent	Mar-24	exploration
Eagle Plains George Lake	Mar-25	exploration	Standard Uranium Atlantic	May-25	exploration
Fission 3.0 Bird Lake	Feb-24	exploration	Standard Uranium Canary	Feb-24	exploration
Fission 3.0 Cree Bay	Mar-24	exploration	Standard Uranium Sundog	Jun-24	exploration
Fission 3.0 Hearty Bay	Mar-24	exploration	Terra Uranium Hawkrock, Parker, Pasfield	Dec-25	exploration
Fission 3.0 Seahorse Lake	Dec-23	exploration	Traditional Cabin Use	Nov-56	lease
Fortune Bay Goldfields	Nov-24	exploration	Trench Metals Higginson Lake	May-24	exploration
Fortune Bay Murmac	Nov-24	exploration	UEC Diabase	Dec-24	exploration
Fortune Bay Strike	Nov-24	exploration	UEC Hidden Bay	Dec-24	applied
Imperial Oil Bushnell Inlet Cameras	---	environmental	UEC Key West	applied	exploration
IsoEnergy East Rim	May-24	exploration	UEC Roughrider	Mar-25	exploration
soEnergy Edge	Nov-23	exploration	UEX Christie Lake	Dec-25	exploration
IsoEnergy Evergreen	Nov-23	prospecting	UEX Dwyer Lake	Dec-23	exploration
IsoEnergy Geiger	Jun-24	exploration	UEX Pow Bay	Dec-23	exploration
soEnergy Hawk	Jun-24	exploration	UEX Horseshoe-Raven	Mar-24	exploration
IsoEnergy Larocque camp land disposition	2027	exploration	UEX McClean South	Jul-26	exploration
IsoEnergy Larocque East	Mar-25	exploration	UEX Vixen Lake	Dec-23	exploration
IsoEnergy North Thorburn	Dec-24	exploration	Valor Resources Cluff Lake	Feb-24	exploration
			Valor Resources Hidden Bay	Dec-26	exploration
			Valor Resources Forsyth	Dec-24	exploration

AN UPDATE ON YOUR

# Indigenous Protected Conservation Areas



## Inspiring the Next Generation: CLTs Make Impactful Presentations in Schools

By Tina Giroux-Robillard

We are excited to share the success of our recent Community Land Technicians (CLTs) outreach program in the high schools of Father Megret, Father Porte, and Father Gamache Memorial Schools (Hatchet Lake, Black Lake, and Fond du Lac First Nations). From November 15th to 17th, our dedicated CLTs, Trevor Lidguerre, Ian Donard, and Jean Tsannie, were actively engaging with students in Grades 8-12, shedding light on our Indigenous Protected Area (IPA) work, Ya'thi Néné, and their significant roles as CLTs.

The goal of these presentations was to inspire the youth, fostering a deep connection to the land and emphasizing the importance of its protection. Alongside our CLTs, Athabasca Denesuline Né Né Land Corporation (ADNLC) biologist, Katie Rasmussen, also made a compelling presentation on barren-ground caribou, providing valuable insights into the region's rich biodiversity.



We are thrilled to share some of the inspiring feedback we received from the students themselves. The youth expressed a newfound sense of inspiration and connection to their land and community. One student from Fond du Lac shared, "It inspired me to think more about our land and community, having our land protected means we as people are doing good to ensure our survival." The sentiment was echoed by students from Black Lake and Hatchet Lake, emphasizing the significance of preserving their culture and living off the land.

Moreover, the students reflected on the urgent need for land and water protection. A student from Black Lake expressed, "We should protect the land and water so that caribou and other animals live healthy." Both Fond du Lac and Hatchet Lake students, drawing on the wisdom of their Elders, recognized that the preservation of land and water is crucial for ensuring a future for their people.

In addition to instilling a sense of responsibility for the land, these presentations sparked aspirations for careers aligned with environmental stewardship. A student from Fond du Lac expressed a desire to become an environmental lawyer to protect our land, while a student from Black Lake was inspired to pursue a future as a land tech. Hatchet Lake students saw an opportunity to contribute to the well-being of their community, stating, "I'm inspired knowing that I could join these people to help Wollaston Lake and to help the younger children learn their culture."

The impact of these presentations goes beyond the classroom, setting the stage for a future generation deeply connected to their heritage and committed to environmental conservation. We are grateful for our CLTs and biologist Katie Rasmussen for their dedication to fostering a love for the land among our youth.

Together, we are shaping a future where our traditions, culture, and environment thrive for generations to come.



## Leadership Meeting with Ministers

In a significant collaboration on October 12, 2023, leaders from the Athabasca Denesųliné First Nations and the Athabasca communities gathered in Regina, SK to discuss the advancement of Indigenous Protected Areas (IPAs) within the Athabasca region. The meeting consisted of one hour with the Ministers of Environment and Energy & Resources, followed by valuable interactions with senior staff and technicians.

We are happy to strengthen our partnership with the province, aiming to synergize efforts and make substantial strides in advancing Indigenous Protected Areas in the region. By working together, we envision a more effective and sustainable approach to safeguarding the cultural and environmental richness of the Athabasca area.

*Pictured L to R (front): Councilor Ambrose Boneleye (Black Lake), Board member Archie Disain (Black Lake), Councilor Peter Gadzandlare (Hatchet Lake), Chief Kevin Mercredi (Fond du Lac), YNLR Executive Director Garrett Schmidt, IPA Project Manager Tina Giroux-Robillard. L to R (back): Board member Al Sayne (PRO), Councilor John Toutsaint (Black Lake)*



## Thaidene Néné Community Tour

From October 30th to November 3rd, staff from Ya'thi Néné and Board members from Thaidene Néné National Park Reserve/Indigenous Protected Area toured the communities, from Uranium City all the way to Hatchet Lake First Nation. The purpose of this tour was to hear firsthand from our neighbours to the north on a successful designation of an Indigenous Protected Area (IPA), using legislation from both the Northwest Territories government and the National Parks Act (Parks Canada). As our communities are looking at establishing our own IPAs, this information is helpful to understand the process, what worked and what didn't, and how it benefits Łutsël K'é Dene First Nation.

Each community hosted a meeting, followed by some entertainment, such as hand games in Black Lake and Chief Bart Tsannie and his band with some live music in Wollaston Lake!



*Pictured L to R, Thaidene Nene Board: Chair Addie Jonasson and Emilie Saunders, Nihatni Guardian Aileen Drybones, youth delegate Sweetgrass Kaseaway*

## What is an Indigenous Protected Area?

IPAs are usually defined as conservation areas whose creation and ongoing management are Indigenous led, with Indigenous Peoples having the primary role in determining what is important to that specific IPA. This includes things like the values and objectives that are identified as sacred, boundaries of the IPA, the management plans for the IPA, and the governance structures for the IPA.

For the Nuhenéné IPA, this means that the Athabasca Denesųliné decide what values and priorities will guide and direct all work being done to develop protected areas. The community members participate in the process of determining where the protected areas will be located and their size. Elders, youth, leadership, and land-users are involved every step of the process. This is Nuhenéné, and it is important that everyone has the opportunity to have their input.

# COMMUNITY LAND TECHNICIANS

## in the FIELD

### Harvesting Knowledge

By Ian Donard

I attended a half-day training session in Saskatoon, conducted by CanNorth, focusing on gaining the skills required to conduct Community Based Environmental Monitoring Program (CBEMP) interviews. I was joined by two other YNLR employees, as well as Ricky Robillard of Cameco.

Ricky and I have been conducting dozens of CBEMP interviews in Black Lake and Stony Rapids, ensuring representation from every aspect of the community – both men and women, aged 18 and above, and included harvesters of all types of animals and plants. The focus on Black Lake and Stony residents aimed to gather important insights for traditional food consumption. The team also worked to identify any concerns related to traditional foods in the region, emphasizing the collection of diverse samples of plants and animals.

A special shout-out goes to Bradley Laban, YNLR's casual CLT whose invaluable support has been instrumental during these past few months. As I devoted my time to conducting interviews, Bradley stepped up admirably, extending his workload significantly, especially with Duty to Consult interviews.

Once the CBEMP interviews are done, we will send the data back to CanNorth and a final report will be developed, which will be presented to the communities of Black Lake and Stony in 2024.

### Getting Started as a New CLT Team Member

By Trevor Lidguerre

In my first two months as the CLT in Fond-du-Lac, I've been settling into the role well. The welcoming support from the staff has made this transition smoother.

I conducted interviews with Elders in our community, focusing on Indigenous Protected Areas (IPAs) mapping and traditional hunting routes. Mapping out essential information about traditional traveling routes, harvesting areas, caribou spotting, and burial sites was a valuable experience, and listening to the Elders' stories about their past travels for trapping and hunting up north was enlightening.

In October, with support from Tina Giroux-Robillard, I hosted a meeting in Fond-du-Lac, featuring guests from Łutsël K'é Dene First Nation and Parks Canada. They shared insights into Thaidene Néné National Park and Indigenous Land Protection in the NWT, providing an intriguing perspective.



Fond du Lac youth participate in traditional hand games, led by drummer Matthew Mercredi.



Some lucky prize winners.

I also presented to high school students at Father Gamache Memorial School alongside Katie Rasmussen, covering the role and purpose of Ya'thi Néné Lands and Resources. The presentation on barren ground caribou by Katie sparked great interest, leading to engaging discussions and questions from the students. The event ended with Hand Games and drums thanks to our local drummer, Matthew Mercredi. It was a rewarding experience for everyone involved, with prizes for students, including a set of Air Pods for one lucky winner.

### Enrichment for all Ages

By Margaret Powder

We have some exciting developments from Uranium City that showcase the spirit of growth, community, and connection.

First and foremost, we are proud to share the success of our Elders' Wood Harvest Program, an initiative aimed at the well-being of our respected Elders. This program has provided our Elders with a sustainable source of wood for heating their homes. The smiling faces of our Elders as they no longer worry about sourcing wood is a testament to the success of this program.



A recipient of the Elders' Wood Harvest Program.

We are also thrilled to announce that our student numbers have increased by four at Ben McIntyre School! This brings our total student population to six, and we are delighted to welcome these new members to our school community.

In the spirit of embracing the winter wonderland that surrounds us, we have kicked off our very own snowshoe club. The students have taken to the snowy trails with a unique goal in mind. We plan to track our steps and tally the distance covered each week, aiming to collectively travel from Uranium City to the Beaufort Sea in the Arctic Ocean. This exciting initiative not only promotes physical activity but also fosters a sense of teamwork and adventure among our students.

We truly appreciate the support of the communities. It is through collaboration and shared efforts that we are able to create enriching experiences for our Elders and students and foster a thriving community for all. Together, we are building a brighter future!

# Introducing Community Members to CLT Work

By Jean Tsannie

I had the pleasure of working with a local from Wollaston on a few occasions this fall. Jacob, somewhat unfamiliar with the details of CLT work, enjoyed witnessing firsthand the efforts we take to protect and preserve our ancestral lands.

The majority of our work this fall involved exploration site visits. This hands-on approach is crucial to ensure the ongoing health and vitality of our traditional lands. Mid-September took us to Geikie River, where we engaged in a scheduled site visit. As summer transitions to fall, it becomes important to assess any environmental impact from exploration activities.



Jean and Jacob conduct an exploration site visit at Geikie River.

To reach the site, we arrived by float plane. On arrival, we inspected the waste management area, finding the waste properly stowed in bins ready for removal. The shoreline was also assessed for cleanliness, and we are happy to report that the site met our expectations.

During our visit, the site's tour guide showed us around, offering a glimpse into the area's exploration potential. As part of our commitment to responsible waste management, we shared tips with the site's team, particularly regarding the use of thicker tarps. With animals actively foraging for food in preparation for winter, it becomes important to secure waste products with heavy-duty tarps that can withstand the weather.

As we move into winter, our focus on responsible land stewardship remains steady. We encourage all community members to stay informed and engaged in our efforts; it's the collective actions of each one of us that protects our land and water for future generations.



## NexGen Rook I Project Tour

By Kathy Hay

On November 20th, YNLR representatives Garrett Schmidt, Kathy Hay, Steven Foti, Archie Disain, Al Sayn, Chris Toutsaint and Travis Boneleye, accompanied by a NexGen partner, boarded a King Air in Saskatoon bound for La Loche. The warm reception by NexGen staff members in La Loche marked the beginning of a road trip that would take them an additional 2.5 hours to reach the remote project site at Patterson Lake.

Guided by Adam Engdahl, the YNLR team explored the Rook I Project area, recognized as the largest development-stage uranium project in Canada. From the details of the exploration process to the technology used, the tour provided valuable insights into the advancements and challenges of the mining industry in Nuhené.

The visit served a dual purpose: providing boots-on-the-ground exposure for new staff and committee members while nurturing the enduring relationship between YNLR and NexGen. The firsthand experience allowed participants to witness the collaborative efforts shaping the region's economic landscape and gain a deeper appreciation for the significance of responsible resource exploration.



## Denison Wheeler River and Moon Lake Site Visits

By Dana Kellett

YNLR staff Megan Wallace and Dana Kellett visited Denison's Moon Lake and Wheeler River Projects in early November. They learned about Denison's exploration activities at Moon Lake and the proposed in situ recovery (ISR) method of uranium extraction at Wheeler River. Denison staff generously housed and fed Megan and Dana at their Wheeler River Camp for two nights.

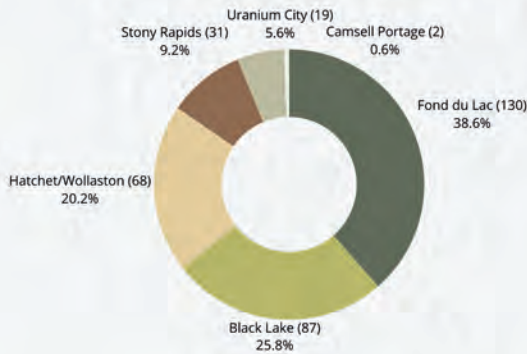


# TRAINING & EMPLOYMENT

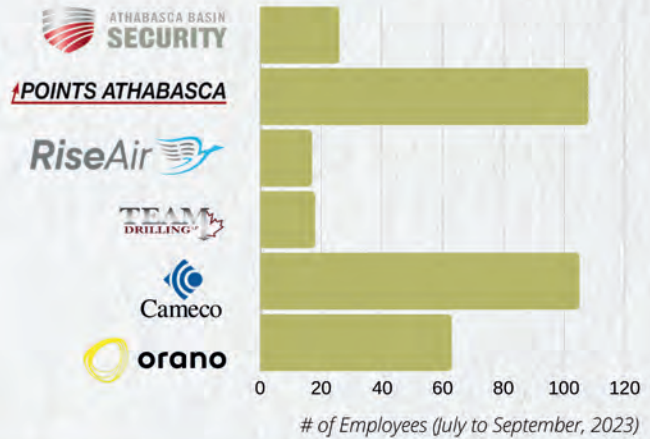
## Updates in Nuhenēnē

Facilitating workforce growth, business development, and lifelong learning in the Basin.

### Employees by Location



### Basin Employer Statistics



**May-Britt Jensen** recently joined Ya' Thi Néné Lands and Resources team in early October as a Contractor with the focus of supporting the communication and marketing of the EXPORT Database for both community members and businesses alike. With this being key to operating a successful and effective database, residents and members will have a better understanding of the value and benefits of what YNLR wants to accomplish. For the EXPORT Database to grow and expand, May-Britt plans on building relationships with each community and the residents, businesses, and stakeholders by seeking what types of supports are needed. May-Britt recently had the opportunity to travel with the team and participate in the Athabasca Basin Community Tour held from October 16th to 19th. May-Britt will continue networking with businesses and industry to make available work placements and training opportunities. May-Britt lives in Uranium City and has extensive experience working with First Nation and Métis communities. She brings an understanding that each community is unique in their own way with different needs and that working with community members is how strong relationships begin.

## Elders' Corner

Upon arriving at Bompas Lake, SK, and spotting an ancient teepee ring: "A long time ago, our ancestors travelled this route, and had teepees made out of caribou hides. They made perfect circles like this one. Our people survived like that. We never used to build cabins as we were always on the move, nomads. We followed caribou and this is one of our sites here. It makes me proud to have young Dene people out here to see this. This is the purpose of this trip here. It is so beautiful out here. Teaching our younger people and they can enjoy it too".

- Freddie Throassie



# WELCOME

## NEW TEAM MEMBERS

### Ivan Adam

Ivan is a member of the Fond du Lac Denesyliné First Nation. Ivan has been a Ranger for over 18 years and has significant on-the-land experience and knowledge. Ivan has worked in Carpentry and Security and he brings those skills to his role as Elder Support Community Land Technician. We are pleased to welcome Ivan to the YNLR team.

### Casey Mercredi-Throassie

Casey is a new Elder Support Community Land Technician in Black Lake. He brings experience in areas such as security and driller helper training, as well as his chainsaw certification and land based knowledge training to his position. Casey spends time harvesting traditional food and wood for heat. Casey will be a benefit to YNLR.

### Jason Adam

Jason is a member of the Fond du Lac Denesyliné First Nation. He has many years of experience and skills including Heavy Equipment Operator, Mining, Line Cutting and Water Treatment. Jason brings his on-the-land knowledge and experience to his casual Elder Support Community Land Technician role.



### Steven Foti

Steven joined our team in the Project Coordinator role. He has a diverse background in planning and experience in project coordination. Steven has over 15 years experience working in various roles with SaskEnergy. His extensive experience in leading and managing projects will be an asset to our team.



### Kathy Hay

Kathy is our new Corporate Affairs Manager and is a member of the Black Lake Denesyliné First Nation. She has degrees in Human Resource Management and Sociology, along with over 10 years experience in marketing, communications, and employment counselling and coaching. YNLR is fortunate to have Kathy join our team.



### Curtis Tsannie

Curtis joined the YNLR team as an Elder Support Community Land Technician in Hatchet Lake. He is a former mill operator, maintenance worker and labourer, and also served as a casual CLT with YNLR. Curtis brings his extensive on-the-land experience with harvesting wood and traditional food to his role. Curtis will be a strong resource to YNLR.



### Trevor Lidguerre

Trevor is our new Community Land Technician in Fond du Lac. Trevor has experience as a Driller Helper, Barge/Deck Helper, Ramp Helper, a Customer Service Representative, and a Stock person. Trevor brings his skills and positive attitude to his new role. Trevor will be an effective member of our team.



### Keesha Martin

Keesha is a member of the Fond du Lac Denesyliné First Nation and is our new Indigenous Protected Area (IPA) Coordinator. Keesha graduated from the U of S in 2023 with a Bachelor of Science in Biology (Minor in Chemistry) and has summer student experience with Cameco in both the Environment and Chemistry departments. We are excited for Keesha to support YNLR in the IPA project.



### Austin Donard

Austin is a new Elder Support Community Land Technician in Black Lake. He has a variety of different experiences and skills to bring to his position including maintenance, security and construction, along with his safety & training certifications. Austin spends time on the land harvesting traditional food and wood, and will be valuable to YNLR.



# orano

## Celebrating Employee Long Service

The annual Orano Long Service Awards included two celebrations at McClean Lake, this year on October 4th and 18th. This time around, four employees from the Athabasca Basin were recognized for ten years of service. Last year their supervisor, Eugene Mercredi, was recognized for 20 years, and he is also from the Basin. Gabriel Cook, Nathan Donard and Cameron Pische graduated from the first Mill Operations Training Program at McClean Lake in 2012 and Timothy Sandypoint trained with the 2013 crew.

While the Mill training program has seen a number of different iterations over the years, it has proven to be an excellent way for northern and Basin people to experience life at McClean and see if they have an interest or aptitude for the work. Northern Career Quest may no longer be funding the program, but Orano has been able to get creative with other partners in the Basin like the Ya' thi Néné Lands and Resource Office to keep the program going.

Currently, we have a group of six trainees in the program, who have been through the mandatory safety training, consisting of site orientation, lockout/tagout, confined space, personal fall protection, harassment and violence prevention, fire extinguisher use and WHMIS training. Trainees also spent one week each in the following departments: Safety, Warehouse, Maintenance, Radiation, and the final two weeks with mill operations group. Thus far, there has been great feedback on the commitment of the trainees and strong work ethic. We look forward to celebrating the long service of these trainees in the future. Stay tuned for details about the timing and program details of the next mill utility training program.



*Congratulations to our 10-year Long Service Award recipients from the Basin.*

### Contact Us

As always, we welcome questions and comments any time. Please call us at: 306-343-4500 or reach out through our website: [oranocanada.com](http://oranocanada.com) or social media.

## Santa in the North!

As always, it was our pleasure to participate in the annual Santa in the North Tour of Athabasca Basin communities from December 4th to 6th. It's a wonderful opportunity to catch up with our partners and see the reaction of the children and families at this special time of year. Our thanks to Rise Air for managing the logistics, and it was great to bring along some special guests from the Saskatchewan Roughriders.



*Gifts Indigenous-authored books during our stop in one of the schools.*

## Winter Exploration Program

The exploration team is preparing for the upcoming winter exploration program, which will begin in January 2024. Winter exploration work includes geophysical surveys and drilling in the Points North area on three projects: Waterbury Cigar Lake, Waterfound River and Midwest. Project preparation began in December with ice monitoring and preparation. The Orano team and contractors will utilize Points North and McClean Lake as bases for this work.

A small geophysical program is also planned west of Cigar Lake at Orano's Close Lake project, and the contractor will use a small existing historical camp while completing the work. This survey is planned for mid-winter.

On the west side of the province, two geophysical programs and a soil sampling program are planned at Orano's Preston Lake project, south of Patterson Lake, as well as one small geophysical survey at Marguerite River, situated along the Alberta border. Both projects are scheduled to have their work completed by April 2024.

The Orano exploration team is ISO 14001:2015 and ISO 45001:2018 certified and plans projects to prioritize the health and safety of the team and minimize potential impacts to the environment.



## Protecting and Monitoring Country Foods in the Basin

**Comprehensive monitoring programs are in place at all Cameco and Orano operations in northern Saskatchewan to ensure our environmental protection programs remain effective. Samples of water, air, soil and sediment, plants and fish are collected from numerous locations around the sites and tested to confirm that environmental protection systems are effective.**

Starting in 2000, the Athabasca Working Group (AWG) Environmental Monitoring Program was in place across the Athabasca Basin. This monitoring program regularly demonstrated that country food samples collected in nearby Athabasca Basin communities were not negatively influenced by active uranium mining and milling operations in the region.

In 2018, the AWG program became the Community-Based Environmental Monitoring Program (CBEMP). The benefit of this program is that each community in the Athabasca Basin has a specific, focused study that reflects what they eat, how much they eat and generally where the food comes from. Accompanying a dietary survey, the community-based sampling program includes the collection of water, fish and wildlife samples from areas identified by community members. Sampling is conducted by CanNorth, an independent First Nations environmental services company, and samples are analyzed by the Saskatchewan Research Council.



*Ya'thi Néné Land and Resource Office (YNLR) staff member Dana Kellett assisted in the Community-Based Environmental Monitoring Program's (CBEMP) "fish labs", led by CanNorth's Kristy Todd, in Uranium City, Fond du Lac, and Black Lake. These fish labs were conducted in association with the Cameco, Orano, YNLR, and Athabasca Community Trust Tour in October, and aimed to teach youth how fish sampling and assessments are done for CBEMP. Unfortunately, inclement weather prevented the tour from visiting the Hatchet Lake school.*

CBEMP results have consistently indicated that country foods identified by community members from the Black Lake First Nation, the Hamlet of Stony Rapids, Fond du Lac First Nation, the Hatchet Lake First Nation, Wollaston Lake and, most recently, in Uranium City and Camsell Portage remain safe for consumption. However, not connected to the Uranium industry, it is recommended that lead shot should not be used when hunting upland game birds or large game as it can contaminate the meat of these animals.

In 2022, a Human Health Risk Assessment (HHRA) was completed based on information collected through CBEMP. The HHRA provides an assessment for each community, based on their specific dietary rates and country food information. The HHRA results show that community members should continue regularly eating locally harvested fish, wild game, berries, and plants. CBEMP summaries have been updated and include community specific HHRA results.

Community reports for all the CBEMP programs are available in the local community or summary brochures online at [www.cameconorth.com](http://www.cameconorth.com).

In addition to the country food program, Cameco and Orano also support the independent regional monitoring downstream of Saskatchewan uranium operations to ensure there are no cumulative effects on the regional watershed. The Eastern Athabasca Regional Monitoring Program (EARMP) was established in 2011 under the Province of Saskatchewan's Boreal Watershed Initiative. This industry-government partnership is supported by stakeholders including Cameco, Orano, the Saskatchewan Ministry of Environment and the Canadian Nuclear Safety Commission.

Community involvement is essential to the success of both the EARMP and CBEMP programs. To meet this objective, samples are collected independently by community members or in conjunction with CanNorth. Community members are trained in sample collection, storage and shipping procedures and their knowledge helps determine sample locations for water sampling near each community during the training sessions.

The recent 10-year anniversary of the EARMP program provided an opportunity to summarize and highlight the positive findings over the past decade – check out the study online at [www.earmp.ca](http://www.earmp.ca).

## Your Community Land Technicians are here for you.

Ya' thi Néné's purpose is to protect the land, water, and air of Nuhenéné and to promote the people of the Denesútiné First Nations and Athabasca communities that reside there.

That's why we're always on the lookout for issues and observations from residents of the Basin. If you or someone you know has an observation, notices something, or hears a concern related to the land and water, we ask that you report it to one of our Community Land Technicians (CLTs).

When you make a report to your CLT, they will take the time to listen to your concerns and ask you questions. After collecting as much information as possible they will refer the issue to our head office, where research and analysis will be done and actions to resolve the issue will be determined.

Updates will be provided to the person(s) who reported the issue on a regular basis. Issues that are successfully resolved will be communicated to the communities.

Some examples of issues that could be reported include:

- Seeing an outfitter abandoning an out-post camp, leaving debris and garbage
- Finding an abandoned exploration camp with waste left behind
- A sick or diseased animal (e.g. fish with unknown cysts)
- Observations on changes to the environment (animal behaviour, habitat, etc.)
- Issues with hunting/trapping/fishing/gathering

For more information, contact your local Community Land Technician or Dana Kellett, YNLR Environmental Specialist  
dana.kellett@yathinene.com or call (306) 477-1251.



# EXPORT

EXPORT is a web-based skills inventory and business registration database built to increase communication between community members and partners operating in the region in order to maximize training, employment and business opportunities in the Basin.

### WHAT CAN EXPORT DO FOR YOU?

EXPORT brings companies and communities together with a database of resumes of skilled individuals. EXPORT was built by and for Basin communities and people, providing a platform to give regional partners a direct connection to Basin residents and Basin businesses to better meet community needs and to maximize regional opportunity.

JOIN EXPORT NOW TO  
FIND YOUR NEXT  
EMPLOYMENT  
OPPORTUNITY.



### WE NEED CONTENT FOR OUR NEXT NEWSLETTER

Send your photos to  
admin@yathinene.com with the  
subject line "YNLR Newsletter" to  
be featured in our Winter 2024  
issue!



## YA' THI NÉNÉ LANDS AND RESOURCES

100 – 335 Packham Avenue  
Saskatoon, SK  
S7N 4S1

Phone: 306-477-1251  
Fax: 306-802-4800  
Email: admin@yathinene.com

Office Hours 9:00 to 5:00 weekdays